

The TSG Chapel is an ideal base for caving, climbing, walking and cycling in the local area.

Fees (per person per night)

- Members: £5
- Non-members: £9
- Student group bookings (10 or more): £6

Making a booking

By Email: tsghutbookings@gmail.com. If it is urgent and you do not get a reply, try: secretary@tsgcaving.co.uk
Please check the website calendar for current availability and up-to-date information:
www.tsgcaving.co.uk/accommodation

Any problems during your stay?

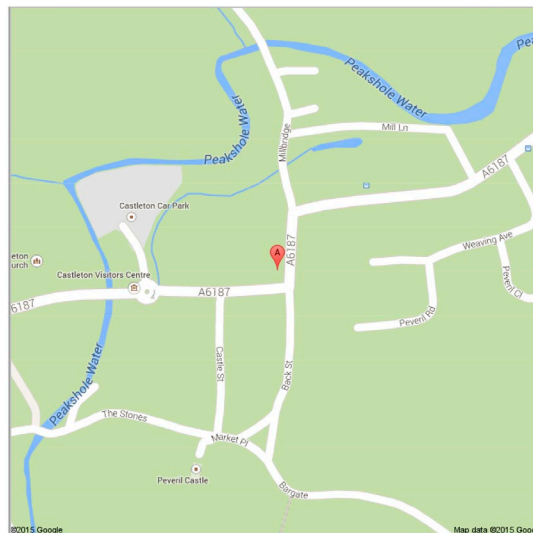
Please contact the Hut Warden if you experience any problems during your stay (the telephone numbers will be displayed on the notice board) or alternatively email: hutwarden@tsgcaving.co.uk
Our address is: Chapel Works, Back Street, Castleton, Hope Valley, Derbyshire, S33 8WE.

The Chapel is directly opposite Castleton primary school, in the centre of town. Free car parking is extremely limited in the village itself, so please try to respect the residents and local businesses, and do not hog spaces at busy times. Paid parking is available at the Castleton Visitor Centre.

As we are centrally located, please remember to respect the public and always behave politely and responsibly, both within and outside the Chapel, especially late at night. Please also ensure to read the safety and fire notices posted within the building before commencing your stay.

Our Location

Google



Map of Castleton showing the Chapel location



Exterior view of the TSG Chapel Works

TECHNICAL SPELEOLOGICAL GROUP

BUNKHOUSE ACCOMMODATION IN THE
PEAK DISTRICT
SUITABLE FOR GROUPS



Line drawing by Gary Wedlake

The Technical Speleological Group (TSG) has been at the heart of Derbyshire caving for many years. Its base, the Chapel Works, has been instrumental in many projects to unlock the hidden gems of Derbyshire's underground heritage, whether pristine and untouched caverns or ancient lead mines.

The most well-known caves in the area are Titan, the Peak-Speedwell system, P8 and Giants Hole, although there are numerous other caverns, potholes and historic mines in the area, both large and small, and to suit all skill levels and tastes; many sites are of national importance. In addition, the four superb showcaves in the area offer regular guided tours, each of very different character, with two featuring the beautiful and very scarce Blue John mineral, and Speedwell Cavern featuring the famous underground canal.

Apart from underground, the local landscape is justifiably famous, with dramatic limestone karst features, gritstone tors and windswept moorland all within easy reach. The historic Peveril Castle, built in 1175, sits atop Peak Cavern gorge, making for one of the most dramatic cave entrances in Britain.

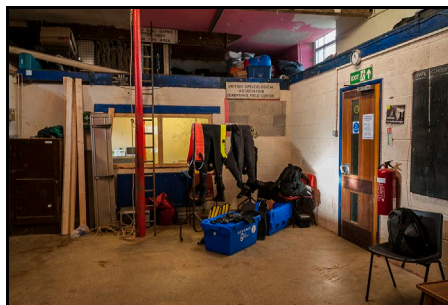
Many cavers who visit Castleton also like to visit one or more of the six excellent and historic pubs in the village. The adjacent Peveril Stores is the perfect place to get a bacon sandwich, or that all-important chocolate bar for the day's trip. The local Post Office is also across the street.

The bus station around the corner provides regular direct bus services to Hope, Bradwell, Hathersage, Sheffield and Bakewell, with further connections to Buxton and Matlock. Hourly train links from Hope to Manchester or Sheffield provide even wider access.

Bookings from individual cavers and caving clubs are encouraged, and the following is a summary of some of our facilities.

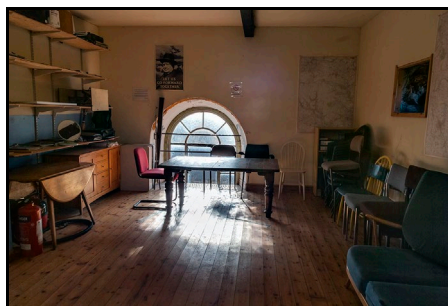
Changing Room

The changing room also serves as a rope-practice area, storage facility, battery-charging station, mobile-shop stall – it's a bit of everything. It's probably the busiest section of the chapel on caving days. The showers, toilets, kitchen and upstairs are all accessed via this area.



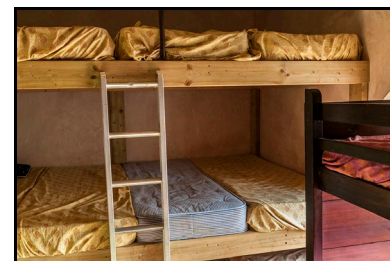
Meetings Room

The meetings room stretches the full width of the upstairs section of the building and is illuminated by two large arched windows. Photos of current club officers are posted here, along with member's photos of TSG caving trips and events. The room is large enough to hold meetings for at least 30 people, and includes a projection screen for AV presentations.



Guest Bunkroom

The guest bunkroom sleeps up to 16 people, and mattresses are provided. Bring your own sleeping-bag and pillows.



Showers and Toilets

The Chapel has two hot/cold showers with toilets combined, and also one additional single toilet. All the rooms are ventilated with extraction systems, and shower drainage is floor-based. Please remember to bring your own towels and soap.

Garage

The garage is the sharp end of the club facilities, storing the club's basic equipment and digging gear. There's plenty of space for dirty changing and facilities for kit washing, with a spin-drier and a rope-washer included. A heated adjoining drying room has plenty of space for wet kit if you're staying overnight.

