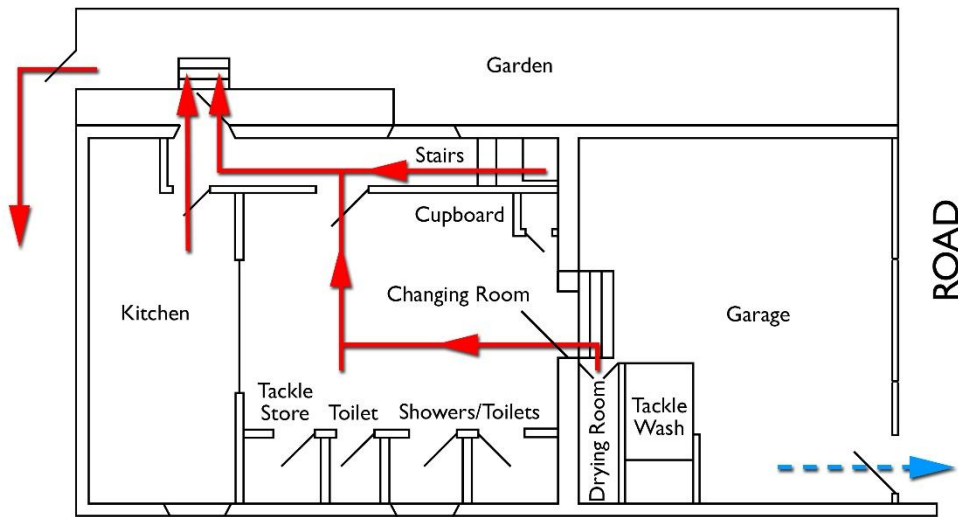


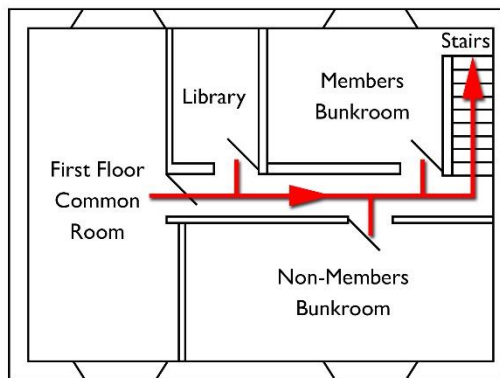


TECHNICAL SPELEOLOGICAL GROUP

TSG Chapel - Emergency Escape Routes



Ground Floor Plan



First Floor Plan

Red arrows indicate the fire exit routes to the garden from both floors, and then from the garden to an external driveway, which is private property, and must only be accessed in a genuine emergency

Blue arrow indicates the external door (not a fire exit), which should only be used if all other routes are unavailable and it is not safe to wait in the building for the Fire Brigade. Caution - opens onto a busy main road and has a low door, which opens inwards.

July 2017